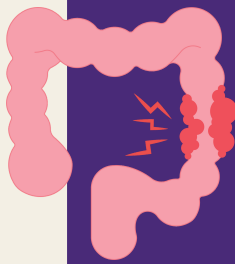


Australia has one of the highest and fast-growing Inflammatory Bowel Disease (IBD) rates globally.



Common Symptoms

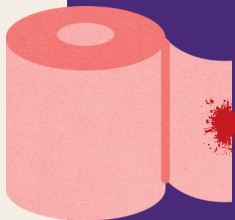


Abdominal Pain

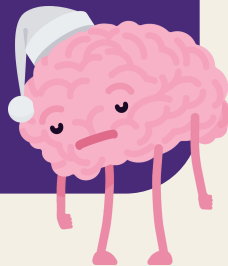
Fatigue & Brain Fog



Diarrhoea & Rectal Bleeding



Insomnia



IBD economic impact of **\$7.8 billion** in 2025

145,230 Working age adults

179,420 Australians living with IBD in 2025

5,240 Children (0-18)

21,590 Young Adults (19-29)

KEY STATISTICS

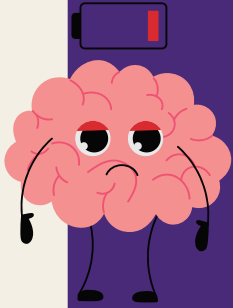
5+ Years to diagnose

About 10% of patients

Think you might have IBD? Check your symptoms here



Living with the burden of IBD



Severe fatigue/
brain fog



Limited medical support



High mental health burden



5+ years to have IBD symptoms under control



\$5,900 annual burden



How CCA can help:

- ✓ Quality information via website
- ✓ Information & education forums
- ✓ Phone advice: NurseLine & Helpline
- ✓ Volunteer-led support groups
- ✓ Youth & children's program
- ✓ Advocacy
- ✓ Community events & fundraising
- ✓ Can't Wait Card

Other CCA initiatives:



Invite the community to get active to help raise awareness and funds

Educational initiative providing professional training and consumer education on IBD care

gut smart

